

146-154 QUANTUM ONE™

MANSFIELD®

Round Front, Vitreous China, Two-Piece Toilet

FEATURES

- High performance pressure-assist, high efficiency toilet (HET)
- Flushmate IV™ flushing technology
- 1.0 gpf / 3.8 lpf ultra-low water consumption
- SAVES almost 40% more water than conventional 1.6 gpf flushing systems
- Round front bowl
- 12" rough-in
- Model 47 chrome-plated, metal push button actuator
- 2-1/8" glazed trapway
- The Mansfield® limited lifetime warranty on china, Flushmate ten-year limited warranty on vessel
- Available in White, Biscuit and Bone







MODEL 146-154

Toilet seat not included



ROUND

COMPONENTS

| MODEL # | DESCRIPTION | CODES/STANDARDS |
|--|---|---|
| 146-154 | Round front, pressure-assist, two-piece toilet. Less toilet seat and supply. Specify color. |     |
| 146 | Round front toilet bowl only. Less toilet seat. Specify color. | |
| 154 | Pressure-assist tank and cover only with chrome-plated, metal push button actuator. Less supply. Specify color. | |
| TANK OPTIONS | | |
| 153 | Pressure-assist tank and cover only with left hand, chrome-plated, metal trip lever. Less supply. Specify color. | |
| 153RH | Pressure-assist tank and cover only with right hand, chrome-plated, metal trip lever. Less supply. Specify color. | |
| TANK TRIM & REPLACEMENT PARTS | | |
| 47 | Chrome-plated, metal push button actuator | |
| 122-LID | Tank lid | |
| FLUSHMATE® 504 | Pressure-assist flushing system. Separate warranty applies. Contact FLUSHMATE® at 1-800-533-3460. | |







146-154 QUANTUM ONE™

MANSFIELD®

Round Front, Vitreous China, Two-Piece Toilet

SPECIFICATIONS

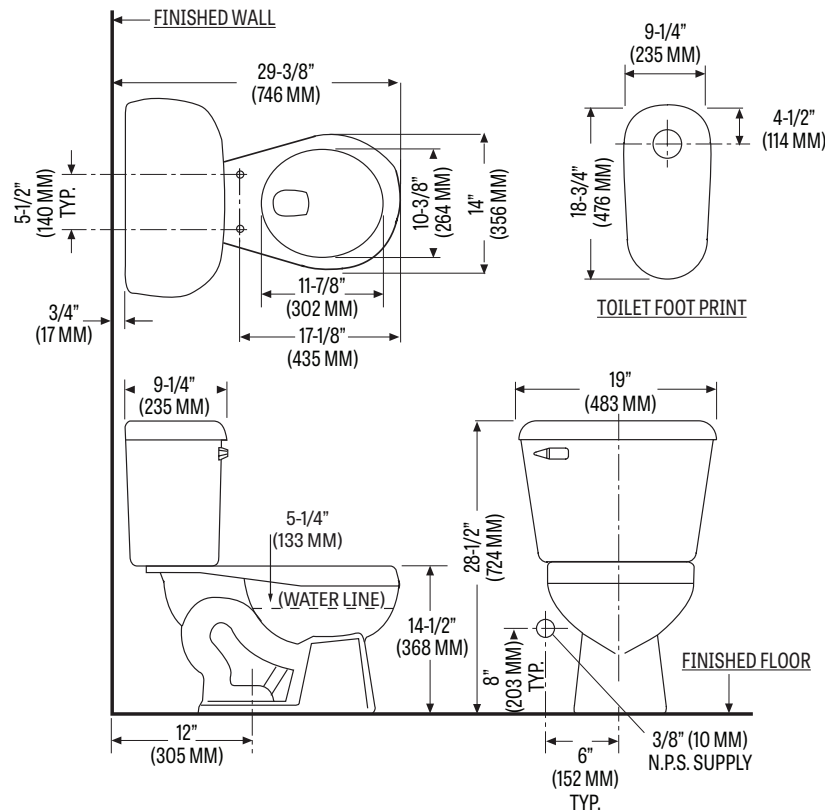
| MODEL # | DESCRIPTION | CODES/STANDARDS |
|---------|--|---|
| 146-154 | Round front (1.0 gpf / 3.8 lpf) two-piece toilet |     |

| | |
|----------------------|-----------------------------------|
| MATERIAL | Vitreous China |
| WATER PRESSURE RANGE | 35 to 80 PSI |
| FLUSH SYSTEM | Flushmate IV™ flushing technology |
| WATER USAGE | 1.0 gpf / 3.8 lpf |
| WATER SURFACE AREA | 9-3/4" X 11-1/2" |
| ROUGH-IN | 12" |
| MaP RATING | 1,000 grams |

| | |
|-----------------|--|
| TRAP DIAMETER | 2-1/8" |
| TRAP SEAL | 2-3/4" |
| SHIPPING WEIGHT | Model 146 - 51 lbs. (23.1 kg) Model 154 - 41 lbs. (18.6 kg) |
| WARRANTY | Vitreous China - Limited Lifetime Vessel - Limited Ten Year (Flushmate) |

TECHNICAL INFORMATION

Note: these dimensions are nominal and subject to change without notice.



Fixture performance and specifications meet or exceed ASME A112.19.2-2013/CSA B45.1-13 standards, and other state and local codes.

